



AUTISM SINCE 1971
EDMONTON

AUTISM SOCIETY of EDMONTON AREA

MEDIA KIT

Inclusive Opportunities & Services for the Autism Community

Autism Edmonton is the oldest autism organization in the province of Alberta and has been serving the Edmonton and area community since 1971. At Autism Edmonton, we deliver life-enhancing programs which ignite the power and potential of autistic individuals. We provide programs and support services for individuals during any stage of life and any stage of diagnosis, as well as supporting their networks including parents, siblings, and service providers. Today, Autism Edmonton continues to be the “go-to” source, the initial point of contact post-diagnosis and provides ongoing support in three key areas: community support and services, advocacy, and knowledge and education.

We are committed to our vision that all people on the autism spectrum have a life full of possibilities. Our strengths include access to flexible funding, a highly skilled and experienced team, and direction that is fueled by our community.

OUR VISION: All people on the autism spectrum have a life full of possibilities.

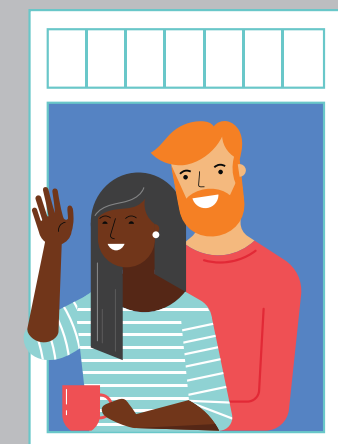
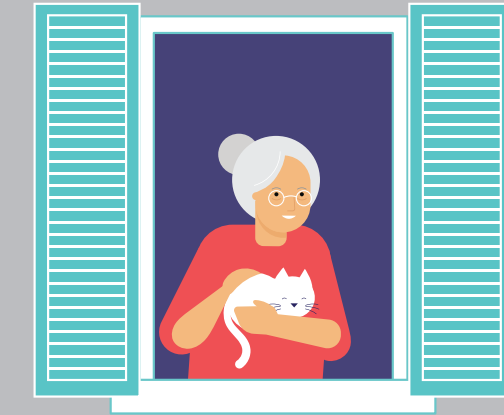
OUR MISSION: To enhance the lives of people on the autism spectrum, through knowledge, services and inclusive opportunities and professionals with autism-related resources.

OUR CORE VALUES:

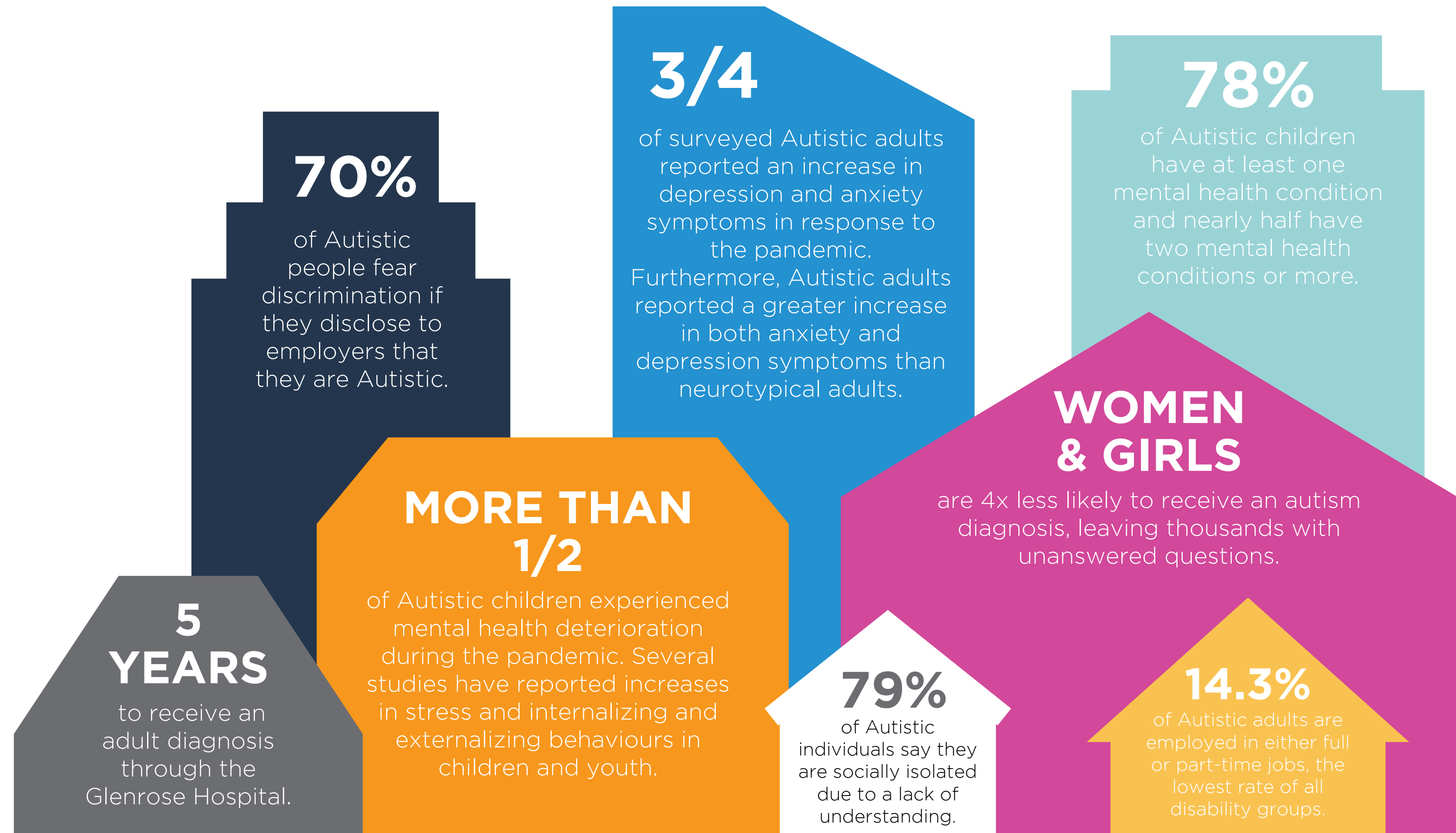
Acceptance: We welcome and embrace inclusivity and diversity of all people, ideas and perspectives in building community.

Integrity: We believe in mutual trust, honesty, transparency, and accountability amongst ourselves, allies and stakeholders.

Respect: We treat one another and all people with empathy, courtesy and kindness



Why is Autism Edmonton Essential?





Autism Edmonton Support Services

As Autism Edmonton is Alberta’s longest-standing agency dedicated to serving the autism community, we have exponentially grown our programs and services to meet the needs of the growing autistic population in the Edmonton area.

COMMUNITY SUPPORT & SERVICES

Autism Edmonton will provide support programs and services to meet the needs of autistic people, and their families, allies, and communities.

- Leadership in navigation & referrals for services
- Be the first touch point for referrals post diagnosis
- Develop innovative programs for AE members based on known gaps
- Existing programs & services are evaluated, monitored, & maintained

ADVOCACY

Autism Edmonton will advocate in the best interests of the autistic community, publicly addressing issues that impact autistic people in alignment with our vision, mission and values.

- AE is a champion for holistic and innovative systemic change for diversity and inclusivity
- Facilitate access to housing for autistic people
- Take a leadership role in facilitating community collaboration
- Encourage cohesion and support within the autistic community

KNOWLEDGE & EDUCATION

Autism Edmonton will engage in continuous education and research on autism with, and for, our members and community.

- Educate and empower the broader community to offer inclusive priorities to autistic individuals
- Develop employment resources for employers of autistic people

Our Programming

Occasio

Opportunity looks different for everyone. The goal of Occasio is to provide opportunities for growth for individuals and support for families. Occasio helps autistic kids and youth make friends, practice independence, gain confidence, and stay active. Participant to staff ratios is based on the level of independence and can vary from 1:1 to 4:1, this maintains social interaction while providing support as needed so all can participate.

The League

This is our social-recreational program for adults on the spectrum. The League helps participants to expand social circles by participating in community activities with peers and developing relationships with one another. The League offers a range of free to low-cost activities to suit our members' wide range of interests and hobbies. Activities vary each month and may include game nights, movie nights, bowling, and dinner outings.

Senior Supports

The Golden Journey: This group is open to adults on the spectrum (ages 50+) who are looking for opportunities to build up their peer support network. Emphasis is placed on self-care, supporting one another and developing a community among members.

The Golden League: A social-recreational group for adults on the autism spectrum (ages 50+) that helps participants expand social circles by participating in community activities with peers and developing relationships.

Peer Discussion Groups

Our Support Services Team hosts a variety of ongoing drop-in groups to serve as a safe place for people to share their experiences, ask questions and receive guidance.

Community Advocacy Support

With a collaborative and person-centered approach, Autism Edmonton's Community Advocate works alongside families and individuals who have been identified as being on the autism spectrum. While using a strength-based lens, we provide a supportive hand in establishing and attaining meaningful goals, which contribute to a heightened quality of life.

Workshops & Educational Opportunities

We offer a variety of educational workshops and presentations to help bring autism awareness to the community and support our members.

The Pantry (A Satellite Food Bank Location)

The Pantry program brings fresh and nutritious foods to the tables of autistic families who are experiencing food insecurity. It is designed to provide access to healthy food and other essential items in an autism-friendly environment for people on the spectrum with limited income and their families.

Support & Resource Navigation

Whether you are an individual on the spectrum, a caregiver who has a family member that has been diagnosed, or a professional looking to support a family or individual, we are here to help. We can assist with connecting you to the appropriate supports and services within the community or help navigate the funding systems and resources that are available.

Resource Guide

Autism Edmonton supplies a resource guide of educational, medical and other relevant community supports.

Community Connections

Community Connections are events and community outings that are hosted throughout the year and are open to everyone. Events include sensory accommodations to prompt positive experiences and participation. Community Connections aims to help your family come together in an environment where you do not have to worry about explaining who your child is and what they are doing.

Autism Housing Network of Alberta (AHNA)

This program strips down the needs of what our members require to feel safe and comfortable at home and aligns them with housing options that fit those needs. We are aiming to create a network of housing options for autistic and neuro-diverse individuals.

E3 Employment Supports

The E3 program (Educate, Empower, Employ) aims to assess employment readiness so that autistic individuals are supported in their growth, wants and needs. Autism Edmonton is building partnerships with various employers to create opportunities for employment for job-ready individuals.

Active Community Engagement



Create a team, join a team, or join as an individual and get your mode of transportation ready to gear up for a fantastic day in the park in this community centered fundraiser.

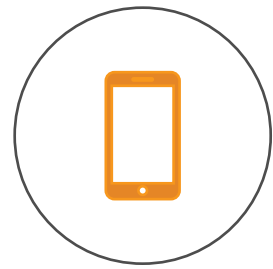


Our annual fundraiser Wine Survivor is your chance to make a positive difference in the lives of thousands of autistic children, teens, adults and their families in our community!



The Opening Doors for Autism Gala is our biggest fundraiser of the year. It is a one-of-a-kind evening to support Autism Edmonton.

Connect With Us



780.453.3971



info@autismedmonton.org



www.autismedmonton.org



11720 Kingsway Avenue NW
Edmonton, AB, T5G0X5

